

Integrated Sexual Health Services in East London

Chris Lovitt – Associate Director of Public Health, LBTH

Dr Liat Sarner – Clinical Director, Sexual Health, HIV,
Rheumatology & Dermatology, Barts Health

5th March 2018

Overview

- Background
- Local picture
- Integrated sexual health service
- New service model
- Future opportunities

Background

- Since 2013, LBTH has been mandated to commission open access services for provision of contraception, testing and treatment for sexually transmitted infections (STI), funded from the PH grant
- National recommendation to strengthen local prevention activities that focus on groups at highest risk, including young adults, black ethnic minorities and men who have sex with men (MSM)

Local picture

- 9th highest rates of new Sexually Transmitted Infections (STIs) in England (9/326 LA)
- Overall the highest rates of new diagnosis of STIs are in the 20 to 24 years age group in women and 25 to 29 age group in men.
- An estimated 13.2% of men presenting with a new STI from 2011 and 2016 were re-infected with a new STI within a year
- 56% of new STIs were in MSM
- HIV prevalence is almost 3 times higher than the national rate (6.5 vs 2.3 per 1,000 population aged 15-59)
- The rate of new diagnosis of HIV (aged 15 & older) is over four times high than that in England (48.3 vs 10.3 per 100,000 population)

Local Performance Indicators

- Rates of testing for STIs in 15-64 year olds are high compared to nationally – Locally there was a 5.4% increase in testing from the previous year
- Between 2014 -2016, 18.2% HIV diagnoses made at a late stage of infection compared to 40% in England
- Tower Hamlets was ranked 288 out of 326 LAs in prescription rates of long-acting reversible contraception (LARC) in 2011-16
- Conception rate for under 18s - 21.2/1000 females aged 15-17yrs (20.8/1000 in England)
- TH has reduced under 18 conception rates by 63.4% between 1998-2015 (vs 55.4% England)

The Integrated Sexual Health Service in East London

- Using an integrated service specification aligned across London, Waltham Forest (WF), Newham, Redbridge & Tower Hamlets jointly re-commissioned local sexual health services in 2017
- Barts Health won, replacing NELFT & ELFT who were providers of contraception services in WF and Newham

Specification: Work Packages

1.1 - Integrated sexual health services

2 - Leadership for the system, training for primary care and other professional and provision of PGDs

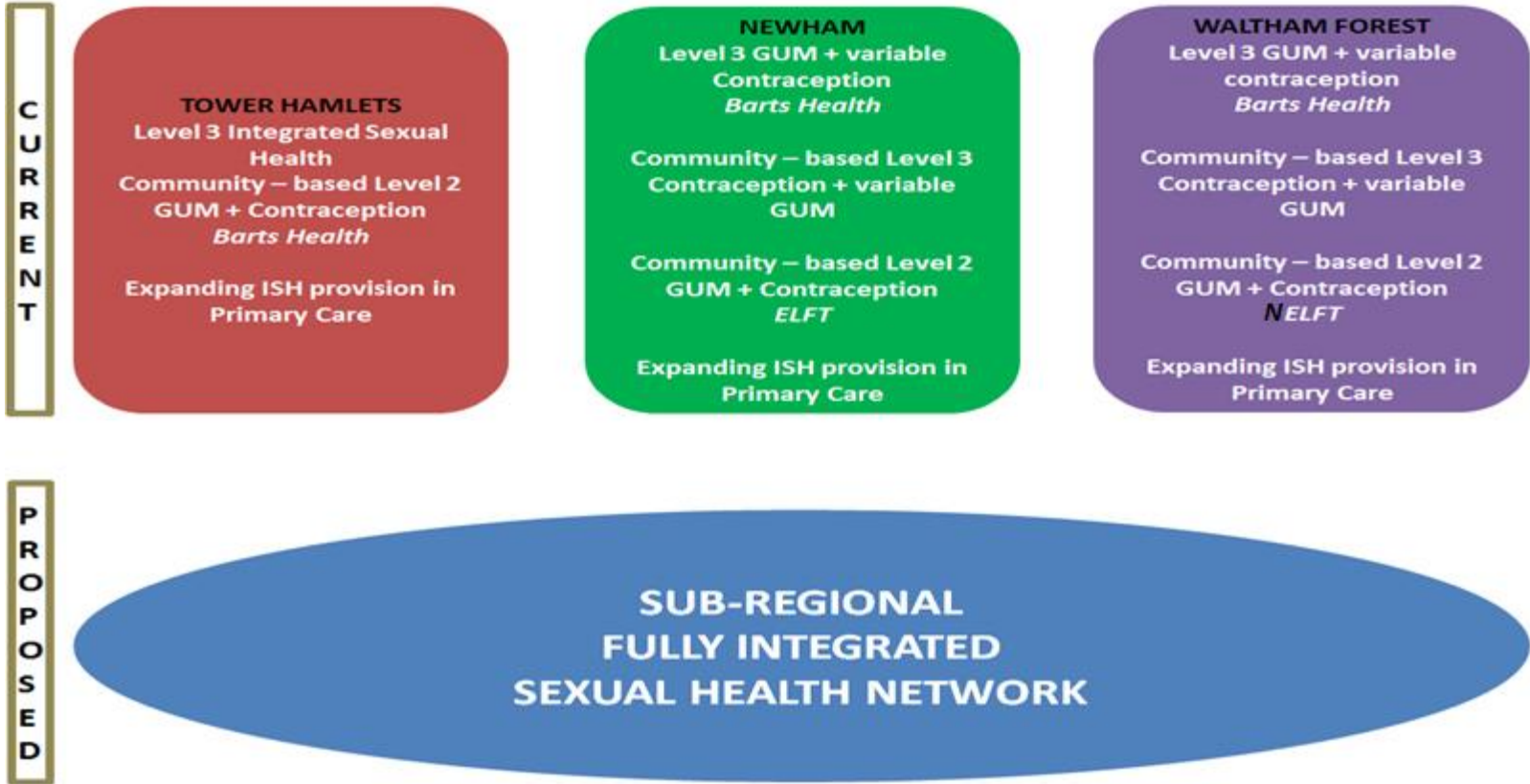
3 - Enhanced partner notification, whole system STI management

4 - Sexual Health Promotion and Targeted Outreach Provision Boroughs

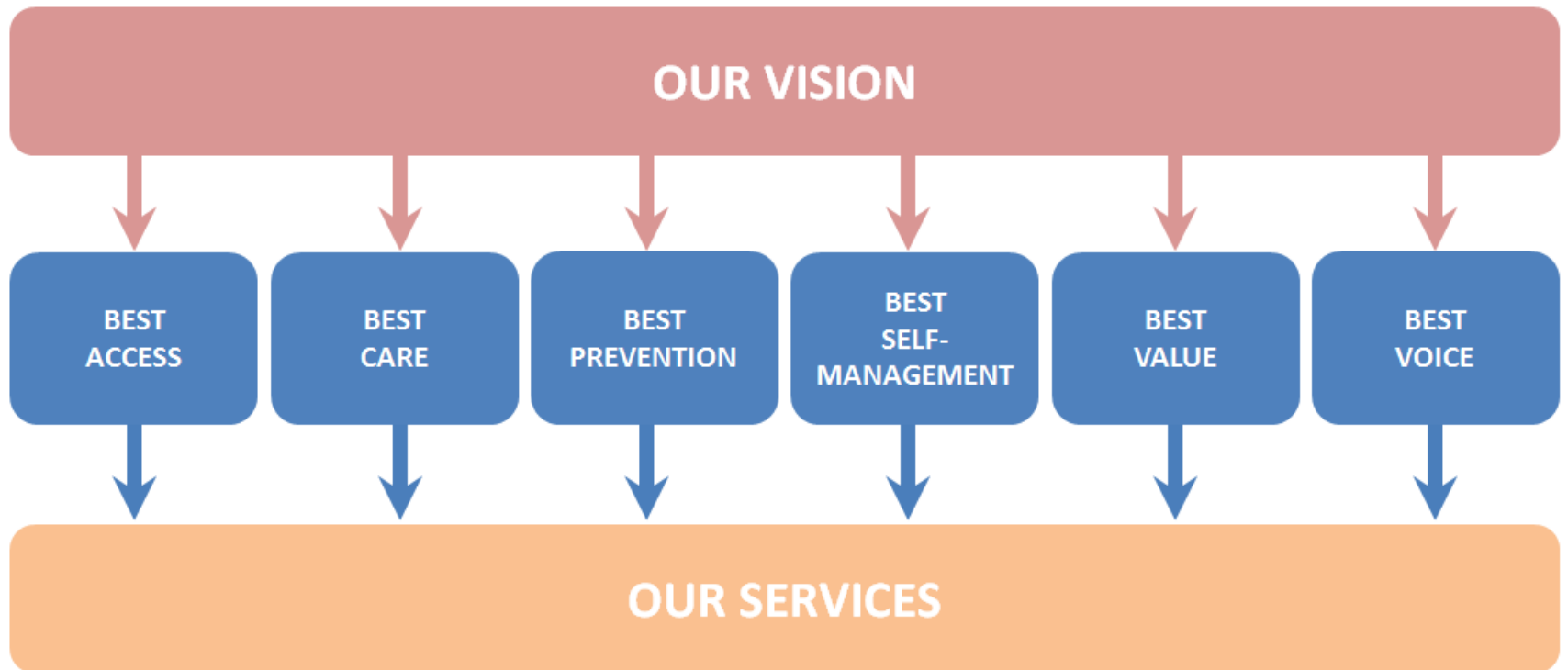
5 - Children and Young People's Additional (non-clinical) services (Newham)

6 - Chlamydia and Gonorrhoea self sampling kits for community and primary care

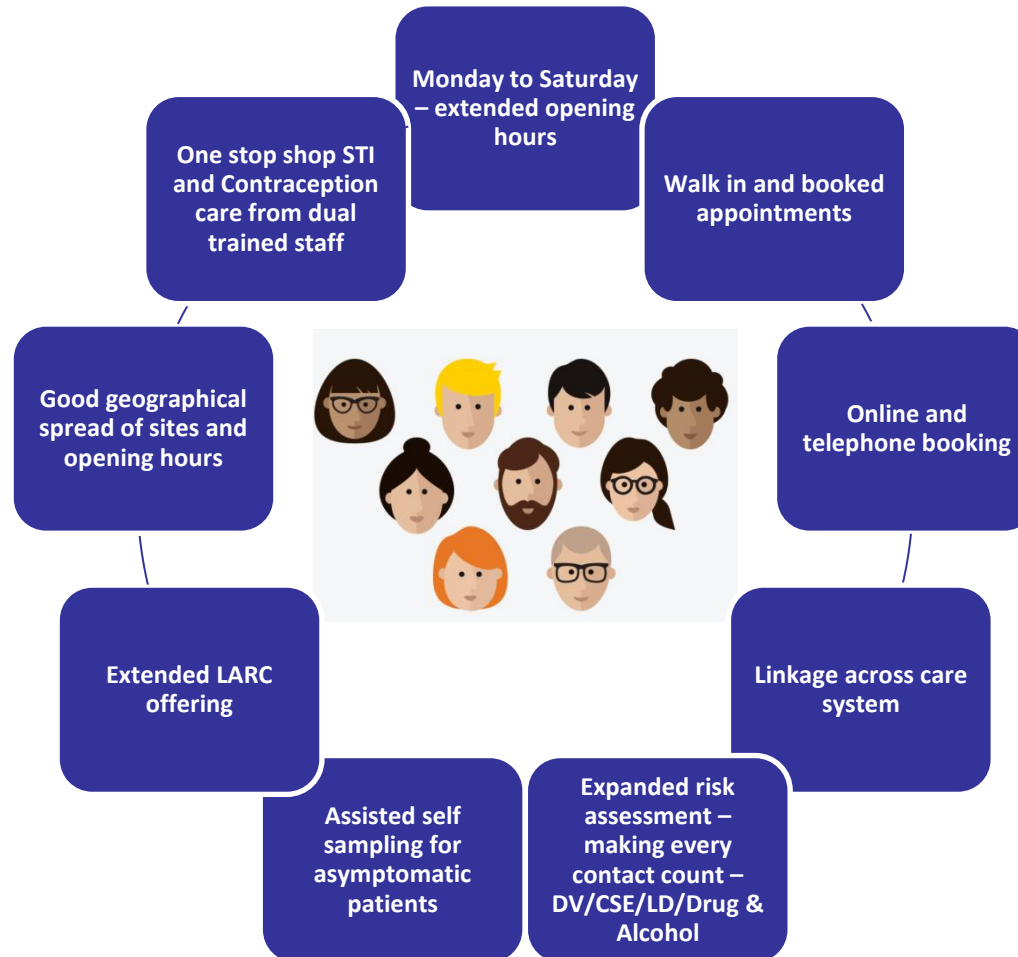
New Service Model



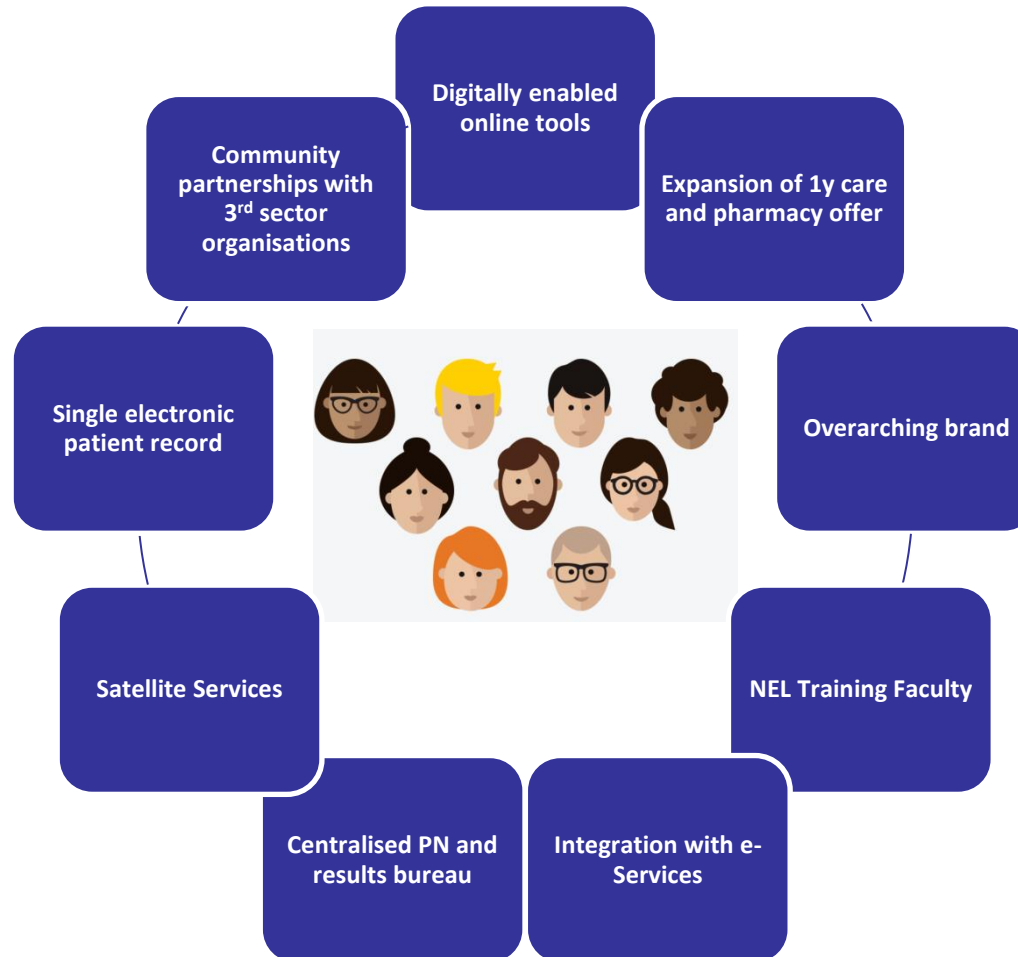
New Service Model: “Best Objectives”



New Service Model: Fully Integrated



New Service Model: Fully Integrated



New Service Model: Locations

- **2 Centres of Excellence**

- Whitechapel and Stratford (SLG)

- **Satellites**

- **Tower Hamlets**

4 satellites (Mile End, Mild May, St Andrews Medical, Step Forward)

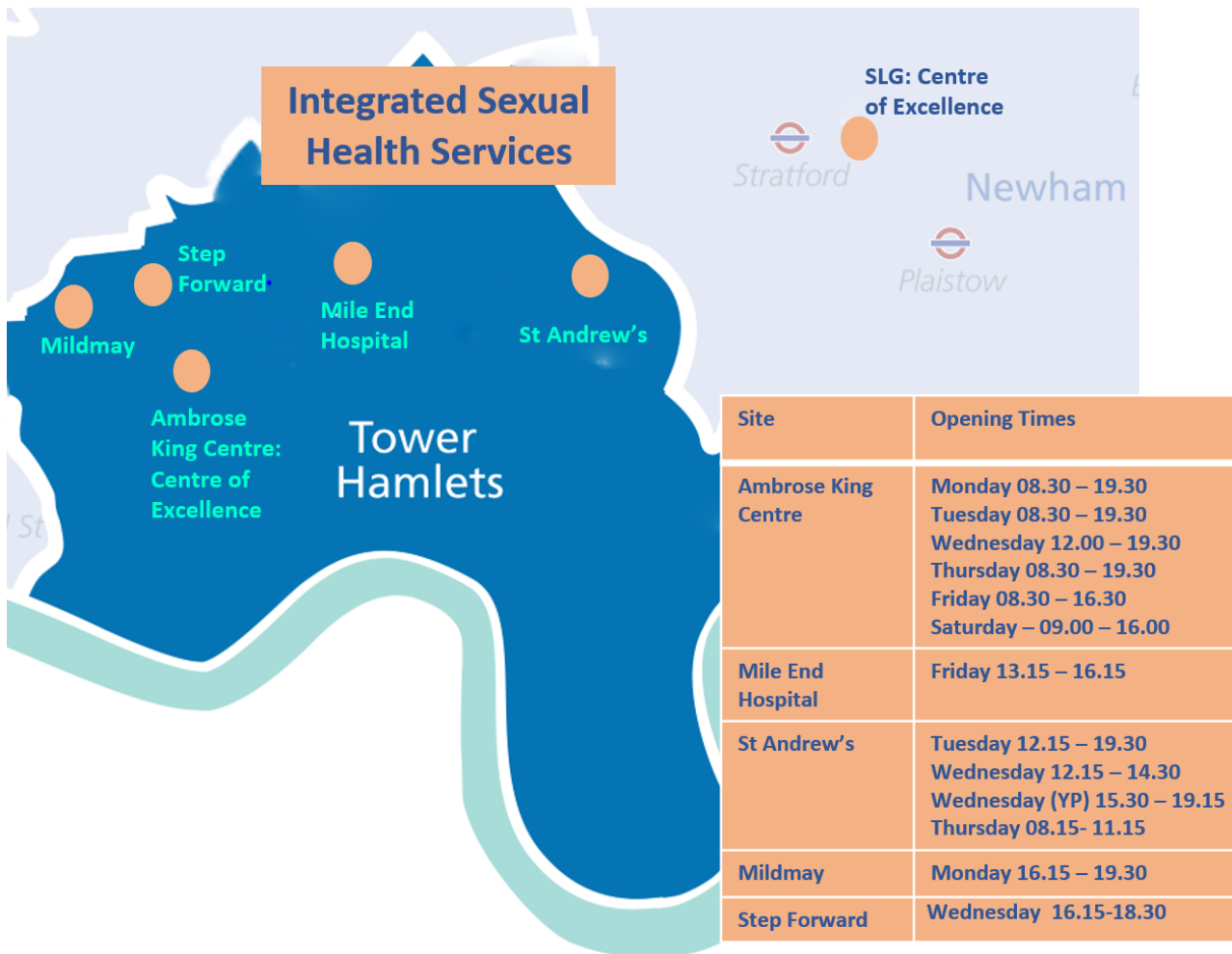
- **Newham**

3 satellites (Shrewsbury Road / Essex Lodge, Blakeberry Pharmacy, West Ham Lane)

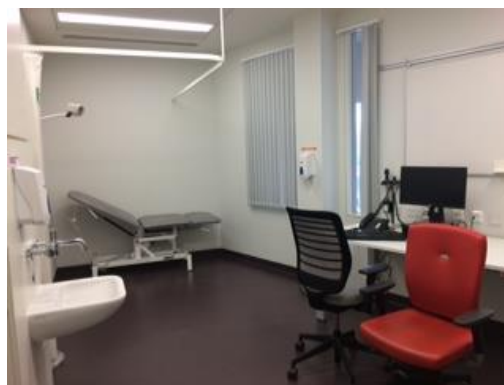
- **Waltham Forest**

5 satellites (Harrow Road, St James, Forest Road, Boots, Chingford Site)

New Service Model: Locations in LBTH



New Service Model: Modern Facilities



New Service Model: Personas

PERSONAS

Asymptomatic/eligible
for e-services:
Motivated/
Empowered

Uncomplicated,
untreated chlamydia



Asymptomatic/eligible
for e-Services: **NOT**
Motivated/Empowered

Contraception

Uncomplicated,
symptomatic STI care



Complex, symptomatic
STI care

Complex contraception

Vulnerable – High risk
groups

ELEMENT OF CARE

- Self-management
- e-Services triage
- Website
- Online decision tools, e.g. contraception counselling
- Awareness campaigns

- Primary Care – GPs/Pharmacies
- Satellites
- Community partner delivery
- Wraparound outreach

- Level 3 Centre of Excellence

New Service Model – Pt L.R



- 17 years
- Female
- Mixed ethnicity - White/Black British

KEY NEEDS

- Recent unprotected sex
- Termination 3 months ago

HOW ADDRESSED BY OUR SERVICE

- Emergency contraception (IUD)
- Sexual Health Screening
- On going contraception needs

New Service Model – Pt A.N



- 19 years
- Originally from Pakistan
- Trans-Man - Female to male transition

KEY NEEDS

- Stigma
- Sexual health and wellbeing

HOW ADDRESSED BY OUR SERVICE

- Health advisor review
- Sexual Health Screening
- PEP/PREP assessment
- Referral for IMPACT trial
- Contraception needs

New Service Model

- Video

Future Opportunities

- Life Sciences cluster will bring together NHS, industry, health science organisations and researchers to deliver improvement in health outcomes
- A new facility for sexual health, integrated with research and development focussed on genomics, data, bioengineering and population health
- Build on Barts Health strong track record in delivering sexual health research
- Enabling local population to take part in innovative trials and encouraging repatriation of local residents to the service